

Guilford events

VOLUME 6 • QUARTER 4 • 2017



**GUILFORD
PERFORMING
ARTS
FESTIVAL**



Support the 8th Annual
Go Pink Project
October is Breast Cancer month



DELIVERING TOWN NEWS

TO EVERYONE IN TOWN



2018

is right around
the corner!

Whether for business, pleasure or holiday gifts

It's time to order your 2018 calendars

Our expert design and production team
will do it all for you:

Planning
Layout & Design
Printing
Delivery

essex printing

18 Industrial Park Road Centerbrook CT 06409, 860 767-9087 www.essexprinting.com

The First Selectman's Corner

I am happy to report that the Town ended fiscal year 2016-2017 with an unaudited estimated surplus of \$801,000. The surplus is mainly due to being \$260,204 under budget on expenditures and collecting additional revenues totaling \$694,016, which after necessary transfers yielded our projected net surplus. This surplus will increase our unassigned fund balance (rainy day fund) to approximately \$9 million. Once again I have to give credit to our supervisors for the excellent management of their department budgets. The surplus can be attributed to our aggressive prior year tax collections, revenues from our building and engineering fees due to our ongoing successes in economic development as well as an unusually mild winter.

Once again we are delighted to report that Standard & Poor's Rating Services has reaffirmed the Town's "AAA" credit rating, which is its highest rating. Supporting its decision, Standard & Poor's credited the Town's strong management and budgetary performance, which is evident by its past eight years of continued surpluses and increasing unassigned reserves, as supporting its highest rating. The Town on August 2nd went out to market to bond \$7 million in long-term bonds and \$12 million in short term notes. A rate of 2.57% was received for the long-term notes and .96% on the short term notes. The rating report also mentioned the Town's continuing economic development projects, which provide additional diversity and growth to the tax base.

I would like to offer my congratulations to the Police Department for once again receiving the Commission on Accreditation for Law Enforcement Agencies (CALEA) Advanced Law Enforcement Accreditation Award. This is the fifth accreditation award for the Guilford Police Department which has been accredited by CALEA since 2005. This is a voluntary process that requires compliance with a comprehensive set of 468 best practice policing standards based on policies that reflect the current thinking and experience of law enforcement practitioners and researchers in various categories.



Joseph Mazza, First Selectman

During the summer the Public Works Department completed its ambitious schedule of summer road projects, which included nine miles of chip sealing. This year the focus again was in the North Guilford area. The department also reconstructed Driftwood Lane as well as Podunk Road from Clapboard Hill Road to Orcutt Drive and installed new drainage.

The Parks and Recreation Department had another successful **continued on page 2**

A photograph of a bedroom interior. The room features a light-colored wooden bed with a curved headboard and footboard. The bed is dressed in a quilted blue and white coverlet and several pillows, including a decorative one with a map of Connecticut. The bed is flanked by matching light-colored wooden bedside tables, each with a lamp. A blue and white striped rug is on the floor in front of the bed. The walls are a neutral color with framed artwork.

DESIGNER FURNITURE | HOME DECOR | APPAREL BOUTIQUE



UNMATCHED
QUALITY
& STYLE

2 MAIN STREET
OLD SAYBROOK CT
860.388.0891

saybrookcountrybarn.com

events

TM Ventures, LLC
dba Essex Printing & Events Magazines

18 Industrial Park Road, P.O.Box 205
 Centerbrook, CT 06409

860-767-9087 Fax 860-767-0259
 email: print@essexprinting.com
 www.essexprinting.com

PUBLISHER

William E. McMinn

ART DIRECTOR

Kathy Alsop 860-391-4372
 kathy@eventsmagazines.com

COVER EDITOR

AC Proctor 860-767-9087

LAYOUT & AD DESIGN

Lynne Hardt

SALES REPRESENTATIVES

VERNON • TOLLAND

ELLINGTON • WILLINGTON
 Tom Fortin 860-299-4568
 tom@eventsmagazines.com

ESSEX • WESTBROOK

CLINTON • MADISON
 Ward Feirer 914-806-5500
 wfeirer@gmail.com

OLD SAYBROOK • OLD LYME • EAST LYME

Betty Martelle 860-333-7117
 betty@eventsmagazines.com

**CHESTER • EAST HADDAM
 EAST HAMPTON • HADDAM**

Essex Printing 860-767-9087
 print@essexprinting.com

GUILFORD • STONINGTON

Essex Printing 860-767-9087
 print@essexprinting.com

Cover Photography

Cover photos supplied by
 the town of Guilford

www.eventsmagazines.com

**OVER 1,000,000 READERS
 17 TOWNS EVERY QUARTER**

Copyright© 2017 Events Magazines. All rights reserved. No part of this publication may be reproduced or transmitted in any form or by any means, electronic or mechanical, including photocopy, recording, or any information storage and retrieval system without written permission. Not responsible for omissions or typographical errors. All advertising material created by Essex Printing and Events Magazines is to be considered proprietary. Essex Printing and Events Magazines reserves the rights and license to all ad designs and photographic images produced by Essex Printing and Events Magazines. Reproduction rights for individual use in other publications is offered and available by purchase directly through Essex Printing and Events Magazines. Editorial appearing in this magazine is submitted by municipal agencies and other approved sources.

CONTENTS

The First Selectman's Corner	1
Assessor's Office.....	4
Support Breast Cancer Patients: goPINK.....	5
Economic Development Department	6
Vote November 7, 2017 in the MUNICIPAL ELECTION	7
Shoreline Chamber of Commerce.....	10
Mark Your Calendar for the Guilford Performing Arts Festival.....	10
Guilford Human Resources	11
Guilford Preservation Alliance - GPA	12
Welcome to the Town of Guilford, CT	12
End of the Year Happenings at The Dudley Farm Museum.....	13
Text Neck.....	14
WALK for Vista in Madison on Oct. 29	14
Guilford Performing Arts Festival Program.....	15 - 18
Guilford Free Library.....	19
SARAH	23
Parks and Recreation.....	24
Youth & Family Services and Parks & Recreation	24
Henry Whitfield State Museum	25
Fall is for Planting	26
Guilford Lakes Golf Course - "Guilford's Little Augusta".....	26
International Day of Peace Art Exhibit.....	28
Ticks are Vectors to Many Different Types of Diseases.....	30
Guilford Art Center.....	32

First Selectman... continued from page 1

and safe summer and beach season. I would like to congratulate all our young camp counsellors for all their hard work running the camps. We also had another year of successful summer events on the Green which included, concerts, the Art Center Expo, The Shoreline Arts Alliance Shakespeare on the Green, the Chamber Taste of the Shoreline and the Jewish Festival. As summer turns into fall we can look forward to the Civic Women Harvest Festival, Parks and Recreation Scarecrow Building Contest, Window Painting and Halloween Spooktacular, and then our Annual Tree Lighting event.

It is with a bit of sadness that this will be my last First Selectman's Corner, since I will be leaving office on December 4. I want to express my sincere appreciation to all the citizens of Guilford for allowing me to serve as First Selectman for the past eight years. I consider it an honor and a privilege to have served as First Selectman. It has been a wonderful experience for me. My advice to my successor is that you serve to benefit the Town of Guilford and its citizens. It is a tough job, but a wonderful job. It truly is an honor and again I want to thank the citizens for allowing me this honor.

Joseph Mazza,
 First Selectman

KLOTER FARMS

Columbus Day sale

Sale ends
Oct. 14

All Furniture 15-20% Off!

Solid Wood • American Made




american
made

Visit our 16-Acre Display Park &
3 Beautiful Showrooms Filled with
Handcrafted Furniture & Home Decor

We're worth the ride!

KloterFarms.com

860-871-1048

216 West Rd, Ellington, CT

FREE DELIVERY CT, MA, RI

*\$1500 min., excluding Cape Cod & islands.

Every Shed & Garage ON SALE!

Plus Free Delivery* and 0% Financing



**Signature
Vinyl Cape**
10x12 **Sale \$3295**
12x16 **Sale \$4395**
(All Sizes On Sale)

**Signature
Vinyl Poolside**
10x12 **Sale \$3595**
12x16 **Sale \$4695**
(All Sizes On Sale)



**Signature T-1-11
Dutch Garage**
14x24 **Sale \$7295**
14x30 **Sale \$8895**
14x36 **Sale \$9995**
Cape & Cottage styles
also at these prices.

Assessor's Office

PERSONAL PROPERTY DECLARATIONS must be filed by November 1st. Penalties will be applied to non-filed declarations. Additional information is available on the Town's website and the Declaration can be found at: www.ci.guilford.ct.us/town-departments/personal-property.htm.

The following is an abbreviated look at some of the exemption programs that the Assessor's Office administers. Some programs are State programs which means it is available in all towns. Some programs are local programs which means they are available in Guilford and only available in other towns that have also passed an ordinance authorizing that particular program. If you think you might be eligible for any of these programs, please call the Assessor's Office, Monday through Friday, 9:00 am to 4:00 pm for more information.

There is also additional information about these programs (and other important information) on the Town's website: www.ci.guilford.ct.us under Departments; Assessor's Office. Please note: Exemptions are always stated in assessment dollars. To calculate the actual tax savings, multiply the assessment exemption amount by the appropriate mill rate (e.g., the assessment exemption amount is \$1,000 and say the mill rate is 22.36 so the tax savings is \$22.36 or \$1,000 times 0.02236).

ONE SPECIALLY EQUIPPED OR SIGNIFICANTLY MODIFIED MOTOR VEHICLE (LOCAL OPTION) owned by the applicant as of October 1, 2017 and used exclusively for the purpose of transporting the medically incapacitated owner is exempt if such vehicle is not for hire and the required application is filed with the Assessor's Office by November 1, 2017, or for such motor vehicles purchased after October 1, 2017, within 30 days of purchase.

ONE MOTOR VEHICLE FOR AN ACTIVE DUTY SERVICEMAN (STATE PROGRAM) is exempt if the motor vehicle is registered in Guilford. Forms for this exemption are available from the Assessor's Office and must be filed no later than December 29, 2017 for taxes due and payable July 2017.

DISABLED SERVICEMEN OR EX-SERVICEMEN (STATE PROGRAM) may apply for an additional exemption by filing Form 20-5455a (issued by the Veterans Administration) with the Assessor's Office by February 1, 2018. The amount of the assessment exemption will vary depending on the degree of disability. If you have previously been granted an exemption because your disability is permanent or because you are 65 or older, then you do not have to re-apply.

HOME LIFE AUTO

IT'S GOOD TO BE IN



Quality service, strength and satisfaction are what we are proud of. I look forward to helping families like yours protect the things that are important – your family, home, car and more. I'm also here to help you prepare a strategy to achieve your financial goals.

I'm committed to helping you:

- Determine your immediate and long-term financial goals
- Find solutions to meet your and your family's needs
- Understand investment solutions, such as annuities, IRAs, life insurance and college savings
- Review your insurance and financial needs as they change
- Answer questions and provide ongoing service & support

David Colella
203-453-9981
34 York St
Guilford
davidcolella@allstate.com

Call our office today for a FREE no-obligation personalized insurance proposal.



Allstate
You're in good hands.
Auto Home Life Retirement

Call or come in today for your Parent-Teen Driving Agreement.
X THE TEXT. [Facebook.com/XtheTXT](https://www.facebook.com/XtheTXT)

Source: Insurance Institute for Highway Safety Fatality Facts 2007-2009. Allstate Fire and Casualty Insurance Co. Northbrook, IL. © 2012 Allstate Insurance Co.

A full service veterinary hospital earning your trust for over 60 years.

Surgery - Dentistry

Endoscopy

Radiology- Ultrasound

Comprehensive On-Site Laboratory

Geriatric Medicine

Behavioral Consultations

Well/Preventive Care

Internal Medicine and Consultations

Cancer Treatment

Pain Management

OFA Hip X-Rays

Acupuncture



Guilford Veterinary Hospital, LLP

Dedicated to Caring for Your Pets Since 1954

OUR VETERINARIANS
Donald Mullen, VMD
Deborah Ackles, DVM
Anthony DellaMonica, DVM
Anita Soucy, DVM
Morna Pixton, DVM
Kirsten Nordt, DVM
Christina DeAngelo, DVM
Katelyn McGovern, DVM

GUILFORD VETERINARY HOSPITAL, LLP
81 Saw Mill Road, Guilford, CT 06437
(203) 453-2707
www.guilfordvet.com

FARM, FOREST OR OPEN SPACE (STATE PROGRAMS) applications must be filed between September 1, 2017 and October 31, 2017. There are additional requirements for the forest program, please call.

FARM MACHINERY (STATE PROGRAM) used exclusively by a qualifying farmer may qualify for a \$100,000 assessment exemption. An M-28 Form must be filed no later than November 1, 2017.

FARM MACHINERY (LOCAL PROGRAM) used exclusively by a farmer who qualifies for the above described program may be eligible for an additional \$100,000 assessment exemption. An M-28 Form must be filed no later than November 1, 2017.

FARM BUILDINGS (LOCAL PROGRAM) used exclusively for farming activities by farmers who are receiving an exemption for their farm equipment [See FARM MACHINERY (STATE PROGRAM) above] are eligible for an assessment exemption of \$100,000 for certain eligible farm buildings. An application must be filed no later than November 1, 2017.

Edmund Corapinski, Assessor
203-453-8010

The 8th annual
goPINK project
because giving back is in!

Support Breast Cancer Patients: goPINK

Throughout the month of October, goPINK raises money to help provide breast cancer patients at the Middlesex Hospital Cancer Center with free integrative medicine services. These treatments can help alleviate fatigue, pain, neuropathy and nausea.

To participate, buy a goPINK T-shirt or get a pink hair extension at a participating salon. You can also visit a restaurant or attend an event that supports goPINK.

For more details, visit middlesexhospital.org/gopink or call 860-358-6200.

The goPINK initiative is sponsored by AAA and Radiologic Associates of Middletown.

The same pair of shoes works for everything, right? Neither does the same pair of eyeglasses...



Kennedy & Perkins
GUILFORD OPTICIANS
Guilford • Old Saybrook • Orange Branford • Hamden • New Haven

kennedyandperkins.com

Economic Development Department

They say it is a sign of getting old when time flies by. Well, here we are, coming into the 4th quarter of 2017. Seems the days-weeks-months have flown by this year...or is it only me? Even so, we have experienced many good things during 2017 and expect to finish the year in a strong fashion.

Guilford's proximity to New Haven, along with numerous local medical businesses certainly provides the town with extensive medical care and services. The Patriot Center, located at 800 Boston Post Road, (former Fonicello site) has the front two buildings essentially completed on the exterior, including the landscaping and parking areas. Construction has started on the third building located in the rear of the property. CT Gastroenterology is occupying 10K sf of the first building. More tenant announcements are expected soon. Esana Plastic Surgery Center and Medspa, located at 10 Long Hill Road (former Village Francais site) is well under



On July 12, Economic Development Commission and the Board of Selectmen recognized numerous businesses celebrating a "milestone" anniversary occurring during 2017.

renovation and will be opening soon. Viso Bello by the Shore, 4 Water Street (former Rituals Spa) is also under renovation and will be opening soon. This is the third location for this company with current locations in Middlebury and Waterbury, CT. Experimac has opened in the Shoreline Plaza. They focus on Apple products and buy-sell-trade- and repair computers, tablets, phones, monitors and accessories. Heritage Collision, specializing in all forms of auto body re-

pair and maintenance has opened at 1984 Boston Post Road. Owner Chris Brettman formally operated the auto body section of The Car Care Clinic in Guilford. As you drive along Rt. 1 on the west side of town, you will see that construction is well underway at The Mews (former Guilford Tavern), to include 14 - 2 bedroom condominium units. And, if you drive up West Lake Avenue, you will see that expansion is underway at The Guilford House to support 21 assisted living units. The Stone

Set The Tone For A Beautiful Home This Fall



1275 Boston Post Road
Westbrook, CT
860.399.6161
www.westbrookfloor.com

WESTBROOK
FLOOR COVERING

Tues - Fri: 9am - 5pm
Sat: 10am-4pm
Closed Sun & Mon

Evening Appointments Available

Insurance Agency has expanded and moved their business to 350 Goose Lane (former Wilbur & King Nursery). New office space construction will be starting on the rear of the lot to support two buildings, 16K sf and 24K sf in size.

On July 12, the Economic Development Commission and the Board of Selectmen recognized numerous businesses celebrating a "milestone" anniversary occurring during 2017. Businesses and organizations included; 25 years - Guilford Natural Food

Works, 30 years - Christopher's Salon & Day Spa, Palumbo's Automotive, Guilford Financial Group, 45 years - Breakwater Books, 50 years - Guilford Art Center, 60 years - Guilford Craft Expo, the SARAH Organizations and 70 years - Guilford Keeping Society. Any omissions from this event were solely by accident. Since this event, we identified additional businesses celebrating a milestone anniversary and will acknowledge them during our next anniversary event. To be included; 25 years - Dr. Kendra Remington

(orthodontic), 30 years - Bohan & Bradstreet, 40 years - Skinsations, 50 years - Strawberry Hollow Farm, and 70 years - Guilford Art League. Please acknowledge and thank these businesses and organizations for being a vital part of our community. Continue enjoying all Historic Guilford has to offer: SHOP-DINE-EXPLORE ... and more.

Brian McGlone,
Economic Development Coordinator
203-453-8071 / mcgloneb@ci.guilford.ct.us

Vote November 7, 2017 in the MUNICIPAL ELECTION

THE UPCOMING ELECTION AND WHAT YOU SHOULD KNOW!!!

On November 7, 2017 Guilford will be voting for a brand new First Selectman - Joe Mazza, our current First Selectman is retiring after eight years of service. In addition, we will also be electing four selectmen to serve with the new First Selectman, four members for the Board of Finance, five members for the Board of Education and one member for the Board of Assessment Appeals. The polling places will be open from 6 am until 8 pm. Unless you have moved, you will vote at your usual polling place. Please see

the Registrar of Voters section in the website for town of Guilford, www.ci.guilford.ct.us, for information on your exact voting place.

MAKE SURE YOU ARE REGISTERED TO VOTE. THE DEADLINE IS OCTOBER 31, 2017. DO IT SOONER RATHER THAN LATER.

HERE'S HOW: ONLINE REGISTRATION

It is now possible to register to vote, to change your address, name **continued on page 8**

GOT A LEAK!

Saving our customers resources and rising maintenance costs since 1974.

American Leak Detection

Residential • Commercial • Plumbers • Property Managers • Realtors

- Pool & Spa Leak Detection**
Water • Sewer • Fountains • Water Features
- Line Location**
Utilities • Septic Line Location • Video Inspections
- Concealed Plumbing Leaks**
Under Slabs • Inside Walls • Main Service Lines



AMERICAN LEAK DETECTION
THE ORIGINAL LEAK SPECIALISTS™

203.691.7110

AmericanLeakDetection.com

Each office independently owned and operated.

Winter weather is coming.

Eversource can help you prepare.

❄️

Lower your energy use, reduce your energy bills and stay comfortable despite what the winter brings.

Call 877-WISE-USE or visit EnergizeCT.com/HES to schedule an in-home energy service.

EVERSOURCE

#1 Energy Efficiency Provider in the Nation
- According to Ceres, 2016 Benchmarking Utility Clean Energy Report

Energize Connecticut - Programs funded by a charge on customer energy bills. **energize CT**
CONNECTICUT

Registrar of Voters... continued from page 7

and/or party affiliation, online. The process is very easy. One path is to go into the Town of Guilford's website - www.ci.guilford.ct.us, choose Registrar of Voters from the Town Department list and then "Register to Vote Online" which is located on the left side of that page; another way is through the Secretary of the State's website - www.sots.ct.gov, choosing the Elections and Voting tab. A third, and the best way, is to go directly to the website, www.voterregistration.ct.gov. The only requirement for registering online is that you have a current and valid Connecticut Driver's License with your Guilford address. This method of registering is available 24/7 until Tuesday, October 31, 2017.

DMV

When creating, updating or renewing your Connecticut driver's license you will now be given the option of registering to vote (if you are not already a registered voter in Connecticut), or to change your current voter registration. This is a relatively new

process to streamline the voter registration system - one-stop shopping.

ELECTION DAY REGISTRATION

If by any chance you have not been able to register to vote before November 7, 2017, you may come to our office, register to vote, and receive a ballot on Election Day. We highly recommend that Election Day Registration be your last option. Your voting experience will be many times smoother if you complete your voter registration by October 31, 2017. On that day, the Registrars will be in their office to receive applications for voter registration until 8:00 pm.

OTHER USEFUL INFORMATION CURBSIDE VOTING

Curbside Voting is available if, for any reason, you cannot walk into your polling place on Election Day. Two poll workers will come to your vehicle and give you a ballot to fill out. If you want to use this option, please call our office, 203-453-8028,

when you are ready to go to the polls so we can set the process in motion and save you time when you get to the polling place.

PERMANENT ABSENTEE STATUS

We would like to remind you of the availability of permanent absentee ballot status. Here's how it works: If you have a disability which prevents you from going to your polling place to vote you may file a request for an absentee ballot and include with that request a letter from your physician which states that your physical condition prevents you from going to the polls to vote. From then on the Town Clerk will automatically send you a ballot for every election, primary, and referendum which you can fill out and return by mail. Every year we will send you a letter asking you to confirm the accuracy of your address. Now, isn't that simple?

Registrar of Voters: Louise Graver and Gloria Nemczuk, 203-453-8028, registrar@ci.guilford.ct.us




Good hearing is
PRICELESS

Is it time to get your hearing checked?

County Hearing and Balance

MADISON
82 Bradley Road
203-245-1950

Call us for a Free Initial Consultation
All services by Doctors of Audiology
www.countyhearingandbalance.com



The
STONE
Agency
INSURANCE

Guilford, Connecticut

In business since 1833

**Home, Auto, Flood, Boat
Business Insurance**

Douglas Danaher, CIC, MBA
Robert Oman, CPCU

350 Goose Lane, Guilford, CT 06437

203-453-2701

www.stoneinsagency.com

GUILFORD TOWN HALL DIRECTORY

www.ci.guilford.ct.us

DEPARTMENT	EMPLOYEE / TITLE / ADDRESS	PHONE	E-MAIL
ASSESSOR	Ed Corapinski, Assessor, Town Hall - 31 Park Street	453-8010	corapinskie@ci.guilford.ct.us
BUILDING	William Thody, Building Official, Town Hall South - 50 Boston Street	453-8029	thodyw@ci.guilford.ct.us
ECONOMIC DEVELOPMENT	Brian McGlone, Economic Development Coordinator, Town Hall - 31 Park Street	453-8071	mcgloneb@ci.guilford.ct.us
ENGINEERING	James Portley, Town Engineer/Facilities Mgr. Town Hall South - 50 Boston Street	453-8029	portleyj@ci.guilford.ct.us
ENVIRONMENTAL PLANNING	Kevin Magee, Environmental Planner, Town Hall South - 50 Boston Street	453-8146	mageek@ci.guilford.ct.us
FINANCE	Maryjane Malavasi, Finance Director, Town Hall - 31 Park Street	453-8027	malavasim@ci.guilford.ct.us
FIRE	Charles Herrschaft, Fire Chief/Fire Marshal, Fire Headquarters - 390 Church Street	453-8056	gfd10@guilfordfire.com
GUILFORD LAKES GOLF COURSE	Ted Tighe, Golf Course Superintendent, 200 North Madison Road	453-8217	guilford_lakes@hotmail.com
HEALTH	Dennis Johnson, Director of Health, Town Hall South - 50 Boston Street	453-8118	johnsond@ci.guilford.ct.us
HOUSING AUTHORITY	Guilford Court - 32 Guilford Court Boston Terrace - 41 Boston Terrace Sachem Hollow - 310 State Street	453-4760 453-4760 453-4760	
HUMAN RESOURCES	Mitch Goldblatt, Director of Human Resources, Town Hall - 31 Park Street	453-8075	goldblattm@ci.guilford.ct.us
LEGAL/PURCHASING	Pamela Millman, In-House Counsel/Purchasing, Town Hall - 31 Park Street	453-8015	millmanp@ci.guilford.ct.us
LIBRARY	Sandy Ruoff, Library Director, Guilford Free Library - 67 Park Street	453-8282	sruoff@guilfordfreelibrary.org
MARINA	Rod McLennan, Dockmaster	453-8092	townmarina@att.net
PARKS & RECREATION	Rick Maynard, Park & Rec Director, Community Center - 32 Church Street	453-8068	maynardr@ci.guilford.ct.us
PLANNING & ZONING	George Kral, Town Planner, Town Hall South- 50 Boston Street Regina Reid, Zoning Enforcement Officer - Wetlands	453-8039 453-8039	kralg@ci.guilford.ct.us reidr@ci.guilford.ct.us
POLICE	Jeff Hutchinson, Police Chief, Police Headquarters - 400 Church Street Animal Shelter Routine Calls	453-8244 453-8083 453-8061	hutchinsonj@ci.guilford.ct.us
PUBLIC WORKS	Tom Fillion, Highway Superintendent, Public Works Garage - 47 Driveway	453-8081	filliont@ci.guilford.ct.us
REGISTRAR OF VOTERS	(D) Louise Graver, Registrar, Town Hall- 31 Park Street (R) Gloria Nemczuk, Registrar, Town Hall- 31 Park Street	453-8028 453-8028	registrar@ci.guilford.ct.us registrar@ci.guilford.ct.us
SELECTMAN'S OFFICE	Joe Mazza, First Selectman, Town Hall- 31 Park Street	453-8021	mazzaj@ci.guilford.ct.us
SOCIAL SERVICES	Tammy DeFrancesco, Social Services Director, 263 Church Street	453-8009	defrancescot@ci.guilford.ct.us
STUMP DUMP		453-8029	
TAX COLLECTOR	Debi Milano, Tax Collector, Town Hall - 31 Park Street	453-8014	milanod@ci.guilford.ct.us
TOWN CLERK	Anna Dwyer, Town Clerk, Town Hall - 31 Park Street	453-8001	dwyera@ci.guilford.ct.us
TOWN PROPERTIES	Steve Neydorff, Facilities Engineer, Town Hall South - 50 Boston Street	453-8487	neydorffs@ci.guilford.ct.us
TRANSFER STATION	1900 Boston Post Road	453-8095	
YOUTH & FAMILY SERVICES	Lyne Landry, Director, 36 Graves Avenue	453-8047	landryl@ci.guilford.ct.us

Shoreline Chamber of Commerce



There are many exciting events planned for 2017 - following are those that occur in the fourth quarter, October - September:



Shoreline Chamber Women of Excellence

- **October 11 - Women of Excellence awards luncheon at Woodwinds.** This is a multi-Chamber event, honoring women chosen by their peers for both their professional careers and help provided to various groups and individuals in need.
- **October 14 - Chowder Challenge!** Vote on and enjoy the delicious chowders offered by local restaurants. All stations are located on Whitfield St.,



Shoreline Chamber Chowder Challenge

across from the Green. Your vote will help choose the winning restaurant and their charity of choice.

- **November 11 - Dancing with the stars.** The grand finale of this fabulous event includes past dancers and winners in the



Shoreline Chamber Dancing with the Stars.

competition, great music, entertainment and food, held at The Country House in East Haven.



BE LOYAL TO LOCAL

Guilford has it all - a large variety of delicious food in its

restaurants, great shopping in its stores and boutiques, plumbing, electric and hardware supplies. Having the good fortune of being so close to Yale New Haven Hospital provides a fine range of physicians in the area, as well as a state of the art medical facility. And the Guilford school system is the icing on the cake!

Help keep our beautiful town vibrant and healthy - do all of your shopping, dining and service usage locally.

Kathy Testa,
203-488-5500
Kathy@shorelinechamberct.com

Mark Your Calendar for the Guilford Performing Arts Festival



From October 12-15, 2017, performing artists will gather in Guilford to present music, dance and theater compositions and workshops - a variety of genres and disciplines - at the first Guilford Performing Arts Festival (GPAF). Brought together from near

and far - from Guilford, Connecticut, to Birmingham, England - they are seasoned professionals who have graced stages around the world, as well as upcoming artists seeking the limelight at local venues.

The GPAF will offer more than 50 events at 17 locations around the Guilford Green and in other places throughout the town. Events range from bluegrass and rock to opera and Broadway hits, ballet to social dancing, poetry, drama, audience-participation shows, workshops and more, including music in elementary schools. All events are free and open to the public on a first-come, first served basis.

The four-day celebration is dedicated to enriching the lives of Guilford residents and visitors, welcoming them not only as audience members but also as participants. It brings to fruition a long-held aspiration of Guilford resident William Boughton, director of the Guilford Performing Arts Festival. "The arts raise our awareness of the world in which we live with each creator

introducing a unique perspective to our understanding and appreciation of who we are and our relationship to the specific art form," states Boughton. He continues, "I am indebted to our presenting sponsor, the Guilford Foundation, to our other sponsors and patrons, and to the artists, as well as to the volunteers, all of whom have made the Guilford Performing Arts Festival possible."

About William Boughton: Born into a musical family, William Boughton has conducted orchestras from San Francisco to Tallinn. He was the founder/director of the English Symphony Orchestra and became the tenth music director of the New Haven Symphony Orchestra in 2007. Besides his performing career, he is a dedicated teacher and is on the faculty of Yale School of Music and Honorary Professor of the Central University in China. He has received numerous accolades, including two ASCAP awards, honorary doctorate from Coventry University, Jyväskylä City (Finland) Arts Award and the New Haven Chamber of Commerce Annual Award for outstanding achievement to the City.

Shoreline Theatrical Arts is the 2017 fiscal sponsor of the Guilford Performing Arts Festival.

Roberta Wisk Flannery
rwf36@comcast.net
203-260-4558

Guilford Human Resources

GOLDBLATT ELECTED PRESIDENT OF CONNPELRA



Mitchell R. Goldblatt, left, was recently elected President of the Connecticut Public Employer Labor Relations Association (ConnPELRA) Executive Committee for a two-year term beginning September 1, 2017. Goldblatt has served the past four years as the ConnPELRA Vice-President and has been a member of the Executive Board since 2011. The former Town of

Orange First Selectman and present member of the Orange Board of Selectmen, Goldblatt has worked as the Director of Human Resources for the Town of Guilford for the past nine years. In this position Goldblatt has been responsible for all aspects of personnel administration and labor relations including negotiating labor contracts, updating policies and procedures, administering all employee benefits and pension administration, leading wellness programs, and responsible for safety and risk management.



ConnPELRA is the only organization in Connecticut dedicated to educating and training governmental directors, managers and supervisors in labor relations issues. The organization exchanges information and data pertaining to all areas of public sector labor relations including collective bargaining, as well as providing guidance and assistance to its entire membership in these areas.

Besides Goldblatt as President, also elected were Enfield Director of Human Resources Steven Bielenda as Vice-President, West Hartford Human Resources Specialist Nelson Petrone as Secretary, and Shipman and Goodwin Attorney Lisa Banatoski Mehta as Treasurer.

Goldblatt holds a BA from Muhlenberg College (Allentown, PA) and an MBA from the University of New Haven (West Haven, CT). He also serves as an adjunct professor of Public Administration at the University of New Haven and lives in Orange with his wife Abby, and children Carl and Shayna.

Visit our website at:
<http://www.ci.guilford.ct.us/>

We hope you will find our website to be a useful tool to find updated information and explore our wonderful community.

Village Greene Gardens

Celebrating 6 yrs. In Guilford!

FALL WREATHS, GIFTS & DECORATIONS



CONNECTICUT
GROWN



MUMS (10 sizes)

CABBAGE & KALE

ASTERS & FALL PLTS

MONTAUK DAISIES

PERENNIALS, SHRUBS & ROSES
BUY 1, GET 1 FREE

(Higher price prevails. See store/web for details)



PUMPKINS,

(WHITE & SPECIALTY)

GOURDS,

(RARE/HARD TO FIND KINDS)

CORN STALKS,

HAY & STRAW



OIL SUNFLOWER \$21.99 (50 lb.)

Village Greene Gardens llc
715 Boston Post Rd. (Rt.1) Guilford
203-453-1818 (www.villagegreene.net)

Guilford Preservation Alliance - GPA

HISTORIC BOWLING ALLEY OPEN FOR VIEWING
Come see and learn about Guilford's Gothic Bowling Alley! The Guilford Preservation Alliance awarded Dr. Richard Lewis a \$5,000 grant toward the preservation of the historic bowling alley located in the far rear of his property at 29 Broad Street. As a special thank you for GPA support the Gothic bowling alley will be open to the community on Saturday, October 14th from 10:00 until 3:00. Self-guided tours sponsored by the GPA will be available. The very large, two story, Carriage House on the property will also be open for viewing. Don't miss experiencing these historic gem. The kids will be amazed.

GUILFORD CITIZEN'S DAY PARADE

As in years past the Guilford Preservation Alliance helped celebrate our community by marching in the Guilford Citizen's Day Parade. With a whirl to days gone by antique "pen-



A fun time was had by all at the Guilford Citizen's Parade!

ny-farthing" high wheeler bicycles and other antique bicycles were part of the GPA fun. Come to the Parade and watch for the Guilford Preservation Alliance.

WITNESS STONES PROJECT

The Witness Stones Project is planning its first installation of Witness Stones on November 2nd in front of the Guilford

Town Hall on Park Street. The project was started when Doug Nygren brought back the idea of the project from Germany where they remember the locations where Jews lived before they were deported and murdered during the Holocaust. Applying the concept of remembering to local slavery, Doug imagined stones placed in Guilford to restore the history of our past.

The Witness Stone Project is a committee formed under the Guilford Preservation Alliance. The mission of the project is through research, education and civic engagement, the Witness Stones Project seeks to restore the history and honor and the humanity and contributions of the enslaved individuals who helped build our community.

The installation ceremony will include local dignitaries and 8th grade students from E.C.Adams Middle School. For more information please go to: www.WitnessStones.org.

THANK YOU VOLUNTEERS


The Guilford Preservation Alliance wants to thank those who volunteered in the Kiosk at the Information Plaza this year. Our Greeters have been a welcoming sight for folks coming to Guilford for the first time, offering information about our historic town and all it has to offer.

This year we have had visitors from as far away as Singapore, and many states west of the Mississippi. Begun in 2015 the Kiosk has been utilized by hundreds of visitors from 22 countries and 33 states!

The GPA would also like to thank the many business owners who advertise on www.visitguilfordct.com which helps maintain the Kiosk. A list of these advertisers is located at the Kiosk and we encourage you to patronize them in appreciation of their support. The Kiosk has been a big success and the feedback from visitors has made the experience for all well worth the efforts involved.

To learn more about Guilford Preservation Alliance projects visit www.guilfordpreservation.org.

Marcia Safirstein and Tracy Tomaselli



Welcome to the Town of Guilford, CT

Guilford has a small, historic, charming atmosphere which is highlighted by its rustic character and individuality. Unique characteristics include the Town Green with tree lined abutting streets that boast the third largest collection of historical homes in New England, dwellings from the 17th, 18th and 19th centuries. So come, stay awhile and enjoy everything our town has to offer.

End of the Year Happenings at The Dudley Farm Museum

It has been a very busy year for The Dudley Farm Museum in North Guilford - and there is more to come

OCTOBER 21ST:

Harvest Day!

Our annual day-long festival with activities for all is ably co-chaired by Bill Black and Donna Lowell. 9 am - 3 pm. Rain date October 28th.

Demonstrations & Hands-On

Activities: Farmers' Market, Farmhouse Tours, Native American Museum Tours, Antique Tractors and Trucks, Sauerkraut Making, and Children's Activities.

Free Admission: Please bring a donation for the Guilford Food Bank. 203-457-0770. And if it rains, it will get combined with...

OCTOBER 28TH:

Our annual Halloween Party which is put on by the vendors of our Farmers' Market. This is also the final summer market of the year. Always fun, come in costume and don't forget to say, "Trick or Treat!"

NOVEMBER 5TH:

Help celebrate the end of our museum year by joining us for a Barn Dance in our Munger Barn! This family-friendly event is being held on Sunday afternoon from 4-6 pm, with Allan Brozek, a professional caller, doing the calls. Tickets now on sale (space is limited). This is not suitable for younger children, but there will be seating available if you wish to sit out a square.

DECEMBER 2ND, 9TH, AND 10TH:

Holiday Open House with vendors in the Munger Barn, and refreshments and music in the house. This year we are adding a Sunday afternoon to this popular program.

And looking ahead - George Page will again be our Syrup King, sugaring off in our sugar house when the sap begins to run in early spring.

Keep an eye on our web page www.dudleyfarm.com, Facebook page, and our Dudley Farm Doings email for details as they develop.

Want to help out? Let George know! Simply email director@dudleyfarm.com and he'll get the message.

events online

For the latest issue plus archives
go to

eventsmagazines.com

Find your town • Click on the masthead for this quarter's issue • Scroll down for archived issues

Text Neck

Did you know your head weighs approximately 15 pounds and for every 1 inch your head is forward of your shoulders it weighs an additional 15 pounds? Children and teens when asked to stand and text someone had their posture evaluated and found their head to actually be 4.5 inches in front of their shoulders giving them an apparent head weight of 82.5 pounds!

This significant increase in weight will produce tremendous abnormal stress on all the vertebra in the neck, upper and middle back as well as compensations into the lower back. This is especially alarming since these young children will mold their spines and bodies into abnormal postures that can remain into adulthood. The increased stress on these areas will often result in spinal pain, headaches, mood changes, blood pressure problems, internal rotation of the shoulders and decreased lung capacity. As the head

is further forward, the normal curve in the cervical spine (neck) is often lost or reversed which will generally result in degenerative arthritis over time.

Consider that these children often carry heavy backpacks to school and through the school halls. And then when they spend long periods of time using computers and play hand held or video games with poor posture, this problem is increased even further.

Doctors of Chiropractic are well trained to evaluate spinal alignment, function and posture in both children and adults. Should there be areas of abnormal spinal alignment and function present, your Dr. of Chiropractic is able to improve and often correct these areas with specific chiropractic spinal adjustments and make recommendations as to what postural changes can be made when texting, using computers, playing video games and

carrying their backpacks. Chiropractors will also often prescribe exercises to improve the patient's posture and provide strength and stability to the spine.

These abnormal alignment and posture changes can often occur without experiencing any pain. Over time, however, these changes can certainly have a significant impact on their overall health.

As with most health issues, the sooner you can detect a problem, such as abnormal spinal alignment and postural changes, the easier they are to correct. It literally takes only a few minutes for a Chiropractor to check someone's posture and spinal alignment. Why wait for the pain to begin, when having a simple spinal evaluation can save you years of pain and suffering?

Dr. Paul E. Heeren
Heeren Family Chiropractic Center

WALK for Vista in Madison on Oct. 29



The annual WALK for Vista fundraising event to benefit Vista Life Innovations - a post-secondary program supporting the

personal success of individuals with disabilities - returns to Madison Oct. 29.

Open to community members, WALK routes of 3 and 5 miles take participants through Madison's beautiful downtown and coastal neighborhoods. Both routes start and end at Vista's 107 Bradley Road campus and are suitable for individuals of all ages and abilities. This dog-friendly event also features raffle giveaways, team prizes and entertainment.

Proceeds from the WALK benefit Vista's programs and services, as well as the Ed Gallant Scholarship Fund, which provides scholarship opportunities to students and members in Vista's programs.

To register for the WALK, visit www.vistalifeinnovations.org/walk. All participants receive a WALK for Vista T-shirt. For questions about the event, contact Francesca Vignola at 860-399-8080 ext. 268 or fvignola@vistalifeinnovations.org.

To download previous issues of Guilford Events
visit www.eventsmagazines.com and download the issue you desire!



Guilford Performing Arts Festival Program

Thursday, October 12

9:00 am-1:00 pm

**MUSIC IN THE SCHOOLS: FESTIVAL ENSEMBLE -
STEPHEN ROBERTS, COMPOSER
STEVEN ROUTMAN, NARRATOR**

A.W. Cox Elementary School/Calvin Leete Elementary School
The Hedgehog, Tommy the Mouse, Yellow Crane, The Beautiful Rabbit
and *Humpty Dumpty Bounces Back* are sure to delight every young listener. Not open to public.

3:00 pm-4:30 pm

BACH AROUND TOWN - YALE SCHOOL OF MUSIC

First Church of Christ, Scientist
49 Park Street
Violinist Katherine Arndt, who has performed as a featured soloist with several orchestras, will play Johann Sebastian Bach's Sonata No 1 in G Minor, *Adagio, Fugue, Sicil-lienne, Presto.*

6:30 pm-7:30 pm

CONNECTICUT COALITION OF POETS LAUREATE

Guilford Free Library
67 Park Street
The Poets Laureate of Guilford, Canton, Middletown, Norwalk, Old Saybrook and Wallingford will each read three poems. Preceding these featured poets, there will be an open mic invitation to accomplished and aspiring poets of all ages to present one original composition to a live audience.

7:00 pm-8:00 pm

**MUSIC IN THE MARKETPLACE: WITCHCRAFT, AN AUTUMN
CABARET - HARRIS/ROANE DUO**

The Marketplace at Guilford Food Center
77 Whitfield Street
Song stylist Julie Harris and guitarist Stephen Roane will perform fall favorites from the Great American Songbook, starting with "September Song" with autumn favorites and tunes about goblins and ghosts including the title tune made famous by Frank Sinatra. Limited seating.

7:00 pm-8:00 pm

GHS ENSEMBLES—WIND, CHOIR, ORCHESTRA

Christ Episcopal Church on the Guilford Green

7:00 pm-8:00 pm

VIVID BALLET

Calvin Leete Elementary School, 280 South Union Street

7:30 pm-9:30 pm

MADISON LYRIC STAGE - OUTCASTS AND INNOCENTS

First Church of Christ, Scientist
49 Park Street
Tenor Marc Deaton will present a compilation of what he believes are some of Benjamin Britten's best moments on stage. Together with a pianist, French horn and guest soprano, he will perform excerpts from *Peter Grimes, The Turn of the Screw, The Rape of Lucretia, Billy Budd, Serenade for Tenor, Horn and Strings* and the "Canticles," among others.

8:00 pm-9:30 pm

LARA HERSCOVITCH

Bittersweet Barn
316 Little Meadow Road (in rear)
Lara Herscovitch, a modern American singer-songwriter-poet-performer, will play and discuss her own original songs and the people, places and stories that inspired them. Her music is masterful contemporary folk with blues, pop and jazz influences that *Sound Waves Magazine* described as "expertly written prose... songwriting at its best... good for your ears AND your soul." All with a voice *Performer Magazine* called, "clear and smooth like expensive liquor."

Friday, October 13

9:00 am-1:00 pm

**MUSIC IN THE SCHOOLS: FESTIVAL ENSEMBLE -
STEPHEN ROBERTS, COMPOSER
STEVEN ROUTMAN, NARRATOR**

Guilford Lakes Elementary School/Melissa Jones Elementary School
The Hedgehog, Tommy the Mouse, Yellow Crane, The Beautiful Rabbit
and *Humpty Dumpty Bounces Back* are sure to delight every young listener. Not open to public.

1:00 pm-2:00 pm

BALLROOM DANCE WORKSHOP

Arthur Murray Dance Studio
11 Water Street
Dust off your dancing shoes! Arthur Murray and staff will conduct a ballroom dance workshop featuring many different styles and genres for all ages and abilities.

1:00 pm-2:00 pm

CIRCLE CONSORTIUM

Guilford Free Library Community Room
67 Park Street

Guilford Performing Arts Festival Program

Circle Consortium performs music from the Renaissance, Baroque and Classical eras, ragtime and music of today.

3:00 pm-4:00 pm

BACH AROUND TOWN - YALE SCHOOL OF MUSIC

First Church of Christ, Scientist

49 Park Street

Ariel Horowitz, violinist, will perform Johann Sebastian Bach's Partita No 2 in D minor, *Allemande, Courante, Sarabande, Gigue, Chaconne*.

Ariel co-founded The Juilliard School's Heartbeat Project, an arts education initiative on the Navajo Reservation.

3:00 pm-5:00 pm

WRITE IT OUT: A COLLABORATIVE SONGWRITING

WORKSHOP - LAURA CLAPP

Guilford High School

605 New England Road

Write It Out is a collaborative workshop focused on an introduction to the mechanics of songwriting and an interactive exchange of ideas culminating in the construction of the framework of a song. Students are asked to brainstorm on a series of topics as a whole and are then broken into smaller groups to allow for the development of ideas.

They will be guided as needed, and will then come together to share their songs with the group.

6:30 pm-8:00 pm

ORIGINAL SONGS FOR PIANO AND GUITAR - LAURA CLAPP

The Marketplace at Guilford Food Center

77 Whitfield Street

The program will feature two songwriters from the afternoon workshop, Write It Out: A Collaborative Songwriting Workshop.

Limited seating.

6:30 pm-8:00 pm

THE BEST OF RODGERS AND HAMMERSTEIN - OPERA THEATER OF CONNECTICUT

First Church of Christ, Scientist

49 Park Street

Professional singers from Opera Theater of Connecticut (OTC) will present The Best of Rodgers and Hammerstein, a concert of highlights from Broadway hits, such as *Oklahoma, Carousel, South Pacific*, and *The King and I*. The performance includes witty and informative narrative by OTC Artistic Director Alan Mann.

8:00 pm-9:00 pm

#TRENDING

Nathanael B Greene Community Center

32 Church Street

#trending, presented by In Medias Arts, is an audience-participation show perfect for all ages and similar to a *Choose Your Own Adventure* book with choices, dead ends and surprises. Using social media, the audience will vote on the path the main character takes. They will be able to post to a "live wall," interact with the character and each other, comment on the action, post selfies and participate in the entire process.

8:00 pm-9:30 pm

GUILFORD RAMBLERS FOLK IN THE BARN - PHIL ROSENTHAL

Bittersweet Barn

316 Little Meadow Road (in rear)

Led by acclaimed Guilford musician Phil Rosenthal, a former Connecticut State Troubadour and lead singer in The Seldom Scene, the Guilford Ramblers perform a lively program of folk and bluegrass music, featuring songs from traditional and contemporary sources, harmony singing and expert picking on banjo, guitar, mandolin, fiddle, ukulele, bass and other stringed instruments.

Saturday, October 14

9:30 am-10:30 am

DUDLEY FARM STRING BAND

Dudley Farm

2351 Durham Road

Dudley Farm String Band brings together bluegrass, traditional and progressive styles, playing old-timey standards, as well as progressive folk or rock and roll sets. They pull tunes and styles from Bill Monroe, Ralph Stanley, Doc Watson, Bela Fleck, Pink Floyd, Irving Berlin, Jerry Garcia and David Grisman and have also developed original tunes. The five band members are Mat Crowley, mandolin; Irv Hagwood, banjo; Stan Hershonik, harmonica; Brian Young, guitar and David Ladd, bass.

10:00 am-4:00 pm

STEPPING SOUNDS - JARROD RATCLIFFE

Guilford Free Library

67 Park Street

Stepping Sounds is an interactive sound installation, fun for everyone, but primarily for young children. Sensors placed on the floor trigger sounds when walked on. A participant or group of participants can choose from varied sounds, including musical instruments, animals, weather and outer space.

11:00 am-1:00 pm

COMMUNITY BAND WORKSHOP

Nathanael B Greene Community Center

32 Church Street

New to your instrument? Haven't played for a long time, but want to give it another shot? Ever wanted to be part of the band? Come enjoy a workshop with members of the Guilford Town Band and then be part of the afternoon performance. This experience will be geared toward instrumental musicians of all ages and abilities. Novice musicians are welcome. Mark Gahm, director of the concert band and the wind ensemble at Guilford High School, will conduct the workshop. Register at: <https://goo.gl/forms/Lgjt4SHz2rP5dRkp2>.

11:00 am-1:00 pm

INSTRUMENT DISCOVERY ZONE - NEIGHBORHOOD MUSIC SCHOOL

First Congregational Church, 110 Broad Street

Guilford Performing Arts Festival Program

11:00 am-4:00 pm

CHORAL WORKSHOP AND PERFORMANCE OF VIVALDI'S GLORIA - KEVIN BUNO

Guilford High School Chorus Room

605 New England Road

Kevin Bunno, Director of Choral Ensembles at Guilford High School and Director of Music Ministry at St. George Church, will conduct a choral workshop, followed by a group performance of Vivaldi's *Gloria*. All festival attendees are invited to the performance, which begins at 3:30 pm. Register at: https://docs.google.com/forms/d/e/1FAIpQLSeKK5hNqYA534UeISSNAOg6JxEzCSyqIStgNeu1IdrkUNurHQ/viewform?usp=sf_link.

1:00 pm-2:00 pm

THE PERFORMER'S SURVIVAL GUIDE: STAYING HEALTHY DURING REHEARSALS AND PERFORMANCES, AN INTERACTIVE PRESENTATION - DIANA HARRIS

This workshop is designed to promote greater health awareness among all types of performers. It will focus on staying healthy despite the demands of rehearsals and performances. The discussion will focus upon using food as a fuel and making healthy choices for snacks and meals. It will provide suggestions for staying healthy, deal with balanced eating, the effects of sugar and the need for proper hydration. It will also explain body awareness and will close with a constructive rest meditation.

1:30 pm-2:30 pm

SONGS OF LOVE AND LAMENTATION - SIR CHARLES PRODUCTIONS

First Church of Christ, Scientist

49 Park Street

Sir Charles Productions presents soprano Jillian Swanson and tenor Thomas Heilman, along with Elm City Consort, in a short program of songs, arias and duets by the early 17th century Italian composers Cavalli, Monteverdi, Caccini and d'India. The music represents their interpretation of how Greek theater was originally performed, which eventually evolved into the beginnings of modern opera.

2:00 pm-3:00 pm

GUILFORD TOWN BAND

Nathanael B Greene Community Center

32 Church Street

Bring along your musical instrument and join Mark Gahm and other members of the Guilford Town Band in an afternoon concert.

3:00 pm-9:30 pm (Break from 6:00 pm-7:30 pm)

SANDY CONNOLLY PRESENTS THE ROCK ROOM

Arthur Murray Dance Studio

11 Water Street

Sandy Connolly will emcee The Rock Room during the festival, as well as perform with her band.

3:00 pm

Cherry Pie

Jump, jive, and kick up your heels to swing, rockabilly, Latin and a

few sultry ballads thrown in just for fun. With Jilian Grey and the boys, Cherry Pie is a delicious, fresh musical dance party with just enough retro sprinkled on top for a sweet-stepping good time!

4:00 pm

Stu Jones & Family

5:00 pm

Pinstripe

Hayden Carter and Connor Backes of Guilford High School and Dominick Gregoretti and Hunter Singewald of Daniel Hand High School come together in their band, Pinstripe, to play rock-oriented originals and classic covers.

7:30 pm

The Racket Downstairs

An eclectic, electric indie rock collective, The Racket Downstairs plays original music with an offbeat aesthetic, besides occasional covers both obscure and neglected, from introspective to apoplectic. Performers are John Liebler, electric ukuleles and vocals; Jack Liebler, bass guitar; Steve Shelton, lead acoustic and electric guitars; Justin Paglino, keyboards; Mark Cascio, drums; Sarah Prown, mandolin, bouzouki, melodica and soprano saxophone.

www.TheRacketDownstairs.com

8:30 pm

Sandy Connolly Band: Southern Blues

Blues, jazz, jazz fusion, folk, and heavy rock musicians from the Guilford, Branford and Madison areas join forces to back Guilford singer/guitarist Sandy Connolly. Covering deep tracks from Lucinda Williams, Bonnie Raitt, and The Little Willies, among many others, Connolly will be joined by Sam Bradford, lead guitar; Justin Paglino, keys; Mark Rabuffo, bass; and Dean Kosh, drums.

3:00 pm-4:00 pm

BACH AROUND TOWN - YALE SCHOOL OF MUSIC

First Church of Christ, Scientist

49 Park Street

Join four string musicians for a Johann Sebastian Bach concert: Rachel Ostler, violinist, Sonata No 2 in A minor, *Grave*, *Fugue*, *Andante*, *Allegro*; James Rosamilia, cello, Suite No 1 in G major; cellist Jenny Kwak, Suite No 3 in C major and Eric Adamshick, cello, Suite No 2 in D minor.

4:00 pm-5:00 pm

ANOTHER OCTAVE - CONNECTICUT WOMEN'S CHORUS

Christ Episcopal Church on the Guilford Green

11 Park Street

Spend an hour with Another Octave enjoying standard concert pieces, as well as traditional and contemporary music reflecting women's lives, as they take you from Broadway to the back porch, from close jazz harmonies to favorites off the pop charts, from quiet love songs to rousing spirituals.

4:00 pm-5:00 pm

TUXEDO JUNCTION: THE SOUNDS OF SWING - PAT TODD

Nathanael B Greene Community Center

32 Church Street

Guilford Performing Arts Festival Program

Sunday, October 15

Tuxedo Junction: The Sounds of Swing presents an hour of the American Song Book, keeping our midcentury musical heritage alive and well.

6:30 pm-7:30 pm

BROADWAY SQUARED - CARLY CALLAHAN, SUSAN YANKEE, ERIC DILLNER AND DAN HAGUE

First Church of Christ, Scientist
49 Park Street

Enjoy an evening of your favorite Broadway hits as duets, trios and quartets celebrate 42nd Street to Whitfield Street, including songs from *Kiss Me Kate*, *The Secret Garden*, *Into the Woods* and *Cabaret*.

7:00 pm-8:30 pm

GEORGE MANSTAN BIG BAND

Nathanael B Greene Community Center
32 Church Street

Live or relive the elegance of the 1940s as you listen to the music of the Kings of Swing - Glenn Miller, Tommy Dorsey, Duke Ellington, Artie Shaw - and many others. Cathy Stewart of Guilford, recruited by Manstan as the only female member of the original group, leads the band.

7:00 pm-9:00 pm

DANCES OF UNIVERSAL PEACE

Shoreline Unitarian Universalist Society
297 Boston Post Road, Madison

(formerly East Guilford - just over the border)

Join hands and form a circle to sing, dance and meditate. The Dances of Universal Peace are simple, meditative, joyous, multi-cultural circle dances that use sacred phrases, chants, music and movements from the many spiritual traditions of the earth to touch the spiritual essence within ourselves and to recognize it in others.

8:00 pm-9:30 pm

FOLK IN THE BARN: BUSKER STORIES, BLUES AND BRASSENS - JOE FLOOD

Bittersweet Barn
316 Little Meadow Road (in rear)

Songwriter Joe Flood will tell in story and song how playing blues, old-time jazz, rock and roll and folk music on the streets of the world's great cities led him to translate the songs of legendary songwriter Georges Brassens and how he met some of America's music greats along the way.

Time TBD

SKUNK MISERY RAMBLERS

Bishop's Orchards Guilford Farm Market & Winery
1355 Boston Post Road

1:00 pm-2:00 pm

FESTIVAL OF DANCE

Nathanael B Greene Community Center
32 Church Street

Four dance companies, Limelight Dance, Eastern Connecticut Ballet, Starship Dance and Shoreline Ballet will offer a fall program and workshop suitable for all ages.

1:00 pm-2:00 pm

A JAZZY LUNCH - GARY GRIPPO

Quattro's Italian Restaurant
14 Water Street

Spend a lazy hour on Sunday afternoon listening to Dr. G, orthopedic surgeon and jazz musician.

2:00 pm-3:00 pm

SONGS OF WOODY GUTHRIE - PHIL ROSENTHAL

Guilford Free Library
67 Park Street

Phil performs songs written by legendary folk musician Woody Guthrie (1912-1967). Guthrie's compositions, many now classics, tell of his early years in the Oklahoma dust bowl ("Dust Bowl Refugee," "So Long It's Been Good to Know You"), his travels across the country ("Hard Travelin'," "Ramblin' Round"), his concern for the poor and downtrodden ("Deportee," "Pastures of Plenty") and his love for his homeland ("Roll On Columbia," "This Land Is Your Land"). Phil explains the events that inspired each song.

4:30 pm-5:30 pm

NEIGHBORHOOD DOSO DANCE BAND

Nathanael B Greene Community Center
32 Church Street

Find your rhythm. Enjoy social dancing to the live music of the Neighborhood DoSo® Dance Band, a pan-generational group whose musicians range from teens to seniors.

Presenting sponsor:

Guilford Foundation

Shoreline Theatrical Arts is the fiscal sponsor of the 2017 Guilford Performing Arts Festival.

www.guilfordperformingartsfest.org

Program most current as of publication. Please check our website for updates.



Guilford Free Library

67 Park St. Guilford, CT 06437

phone: 203-453-8282, fax: 203-453-8288

guilfordfreelibrary.org

Children's Programs

AUTUMN 2017 CHILDREN'S PROGRAMS

REGISTRATION for starred (**) programs begins on Tuesday, September 5, at 9 am in person, by phone at 203-453-8282, or online at www.guilfordfreelibrary.org.

SPECIALS

Funded by the Friends of the Guilford Free Library

Open To All - Please Register

****Junior Chess Class:** Dr. Ani Deshpande, a United States Chess Federation Certified Chess Coach and a two-time Wisconsin State Chess Champion, will teach a 5-session chess class to students in kindergarten and first grade. No prior knowledge required. There are a lot of benefits for children who play chess, including: increased IQ scores, improved problem solving skills, ability to make difficult and strategic decisions independently, and a fostering of critical and creative thinking. Registration required. Plan to attend classes all five weeks. Space is limited. Tuesdays, October 3rd through November 7th (skip 10/31) from 4:30-5:15 pm Grades K-1 only

Guilford Comic Con: Get ready for a fun, free event that has something for everyone. Are you a kid who loves superheroes? Are you a grownup who loves Pokemon and Harry Potter? Do you like Star Wars, Disney, ninja, aliens, Mario, or something else? No matter who you are or what fandom you belong to, you're sure to have fun at our free all-day event for lovers of comics, sci-fi, fantasy, games, and more! We'll have crafts all day, a costume parade, cartooning workshops, live music, vendors of books, comics, and art, as well as food trucks selling delicious food and treats all day.

Saturday, October 21st

from 10:00 am-4:30 pm

All ages

****Harp and Song:** Debbie Vinick will share her lifelong love of harp music with children of all ages. Kids will learn about the parts of a harp and see how they work together to make music. Debbie will sing & play both original songs and beloved, well-known tunes.

Thursday, November 2nd

from 4:00-5:00 pm

All ages

****Make A Book:** Teen volunteer Ella Stanley will lead this four-week workshop in story basics, with the end result being a real hard-cover book to take home that the children have written and **continued on page 20**



Automatic Fuel Oil Delivery
Diesel
24-Hour Emergency Service

860-388-2298

FAX: 860-388-5557

Call for more information
OR visit moronioil.com
for our current prices!

HOD 591
HTG.0403715-B1
0303724S1



Three Generations. Over 60 Years of Continuous Service.



Automatic Delivery • Burner Installation • 24 Hour Emergency Service

Buy Ahead - CAPS & BUDGET PLANS

**Oil as low as \$1.98
guaranteed for the entire
heating season.**

For 2017-2018 Heating Season. Limited gallons. Prices subject to change.

Library... continued from page 19

illustrated themselves. Children must be able to attend all four weeks. Space is limited.

Thursdays, November 30th through
December 21st from 4:00-5:00 pm Grades 1 to 3

****Thanksgiving Story & Craft:** Children will hear a story and Linda Srebnik of Guilford will help them create a holiday decoration to take home.

Thursday, November 16th
from 4:00-5:00 pm Ages 6 to 8

SERIES

Open to All - Please Register

****Weekend Wildlife:** One Saturday each month, come to the library to learn about local & global wildlife and meet animals & plants. Check back with the library for dates and themes. Registration required for each individual event.

Saturdays, 9/9, 10/7, 11/4, & 12/16
from 11 am-12 pm Ages 4 & up

****In-Be-Tween:** Join us for two Thursdays each month. Sometimes art, sometimes science, sometimes food, but always a great time! Check back with the library for dates and themes. Registration required for each separate event.

Sept. 14 & 28, Oct. 12 & 26, Nov. 9 & 30,
and Dec. 21 & 28 from 3:30- 4:30 pm 5th & 6th graders

****Sneak Peek Book Club:** Do you love to read? Do you want to read books before anyone else? Then you belong in our club. We'll read from books that haven't been published yet, enjoy some snacks, and chat. Please register.

Mondays, September 11th - December 18th (or until we finish our books) from 3:30-4:30 pm Ages 9 & up

****Paws & Read:** Reading can be stressful for children who are struggling with it, and reading to a silent furry partner can help. Sign up for a 15 minute reading slot with one of our licensed therapy dogs: Chief & Miley, and dog handler Howard Taylor, or Lucy, and dog handler Ellen Silberman. Parent/legal guardian must sign a permission form for their child to be alone in the room with the dog(s) and therapy supervisor.

Dates and times for Lucy -

Tuesdays, September 26th - December 19th
from 4:00-5:00 pm Ages 6 & up

Dates and times for Chief & Miley -

Wednesdays, September 13th - December 27th
from 4:00-6:00 pm (skip 10/31, 11/7, & 11/22)

Dates and times for Lucy -

Tuesdays, September 26th - December 19th
from 4:00-5:00pm Ages 6 & up

Dates and times for Chief & Miley -

Wednesdays, September 13th - December 27th
from 4:00-6:00 pm (skip 10/31, 11/7, & 11/22)

****Tots & Tunes:** Come and enjoy a musical program with your toddlers and preschoolers. Dance to great children's music, play musical instruments, and swing scarves. Registration required.

Tuesdays, September 26 through November 14,
10:00-10:30 am OR Wednesdays, September 27
through November 15, 10:00-10:30 am Ages 0 to 5

****Baby Time:** Meet other parents while you learn about developmental issues and let your babies play together. Light refreshments served, free gift for your baby. (Cosponsored by Guilford Youth and Family Services.)

Mondays, October 23 through November 20
from 9:30-10:00 am Ages 0 to 11 months

****One On Ones:** A playful time with songs, stories and poems led by library staff for toddler & parent/caregiver.

Thursdays, September 28 through November 2
from 9:30-10:00 am Ages 12 to 23 months

****Time For Twos:** A parent-child introduction to a traditional story time with books, songs, marching, and more, led by library staff for toddlers & parent/caregiver.

Fridays, September 29 through November 3
from 9:30-10:00 am Ages 24 to 36 months

DROP - IN PROGRAMS

Open To All - Registration Not Required

LEGO® Club: One Friday a month, build theme-based projects and put them on display in the children's room.

September 15, October 13, November 3, & December 22
from 4:00-5:00 pm Kindergarten & up

Books-In-A-Nook: Listen to stories read in a quiet corner of the Children's Room. Community volunteers will read to you from new books and the library's special story collection.

Wednesdays, September 13 through November 29
from 11:00-11:30 am All ages

Storytime: Join us for songs, stories, and puppets from the library's special storytelling collection.

Thursdays, September 28 through November 30
from 11:00-11:30 am (skip 11/23) Ages 3 & up

Pop-In-Playtime: Meet other parents and let your children play together in the library's preschool play area.

Tuesdays and Wednesdays, September 19 through
November 29 from 10:30-11:30 am All ages

Teen Programs

October – December 2017 Teen Events

WRITING OUT OF SCHOOL: TEEN WRITING WORKSHOP

7th graders and up, Wednesdays, October 4, 11, 18 and 25 from 3:30 to 5 pm. Here's the chance to dedicate a few afternoons to tap into your natural creative writing style using language, sounds, and rhythms that are true to you with local author Leslie Connor. Learn how to take your idea to finished stories, poetry, lyrics-whatever interests you. Registration required.

CONNECTICUT PARANORMAL RESEARCH TEAM

Adults and kids ages 7 and up, Wednesday, October 4 at 7 pm. Join the Connecticut Paranormal Research Team for a discussion of investigations and a viewing of evidence of paranormal investigations in which they have participated. Registration required.

DIY CREEPY STRINGS DOLLS

5th graders and up, Thursday, October 5 from 3:30 to 4:30 pm. Create your own creepy, spooky string doll. Registration required.

HALLOWEEN MAKEUP WORKSHOP

5th graders and up, Friday, October 6 from 3:30 to 5pm. Learn how to create a spooky Halloween look with makeup and instruction from a professional makeup artist. Registration required.

GHOST TERRARIUMS

5th graders and up, Wednesday, October 18 from 3:30 to 4:30 pm. Create your own ghoulish terrarium with a variety of craft supplies. Channel your inner Wednesday Addams and make it as haunted and gruesome as you wish. Registration required.

2ND ANNUAL GUILFORD COMIC CON

All ages, Saturday, October 21 from 10 am to 4:30 pm. Are you a kid who loves superheroes? Are you a grownup who loves Pokemon and Harry Potter? Do you like Star Wars, Disney, ninja, aliens, Mario, or something else? No matter who you are or what fandom you belong to, you're sure to have fun at our all-day event for lovers of comics, sci-fi, fantasy, games and more! No registration required.

HALLOWEEN LIGHTED MASON JARS

5th graders and up, Monday, October 23 from 3:30 to 4:30 pm. Create a Halloween-inspired light out of a mason jar. Registration required.

POTTERHEADS

5th graders and up, Tuesdays, October 24, November 28, and December 19 from 3:30 to 4:30 pm. Join an alliance of Harry Potter fans, or "Potterheads," to discuss all things Harry Potter! Take part in Harry Potter activities and games, discuss the books and movies, make wizardly crafts, and more! Registration required.

GAME NIGHT

All ages, Tuesday, October 24 from 7 to 9 pm. Come play games with friends, family, or strangers. You do you. Bring your own or play one of the Library's! Registration required.

3D DESIGN FOR TEENS

7th graders and up, Tuesdays, November 7, 14, 21 and 28 from 6:30 to 7:30 pm.
continued on page 22

Nearly New... Just for You!

Clothing, Collectibles,
Small Furniture, Jewelry,
Household Items

860-434-5514

www.thenearlynew.org

70 Shore Road
(Rt. 156),
Old Lyme, CT
Exit 70 off
Interstate 95



Donations
are welcome
at any time.

Consignors Hours

Wed-Fri 10am-12noon | Sat 10am-5pm

Hours

TUES - SAT 10 - 5 | CLOSED SUN & MON



IN PAIN?

Listen to your Body.

Headaches

Numbness in hands or feet

Neck Pain

Sciatica

Low back pain

Painful joints

Pain in your arms or legs

THESE ARE WARNING SIGNS THAT
THERE MAY BE INTERFERENCE TO
YOUR NERVE SYSTEM.

Find Out How Chiropractic
Can Help! Call Today for a
FREE CONSULTATION

Heeren Family
Chiropractic
Center
Guilford



Like Us
on
Facebook!

203-453-9888
www.heerenchiro.com

Library... continued from page 21

Learn how to design 3D objects using OnShape, an online CAD program.

TEENSGIVING POTLUCK

7th graders and up, Friday, November 17 from 3:30 to 5 pm. Teens are invited to bring a dish to share and enjoy a pre-Thanksgiving feast. Registration required.

NEBULA IN A BOTTLE

5th graders and up, Tuesday, November 21 from 3:30 to 4:30 pm. Create a tiny nebula in a bottle that you can take home and display. Registration required.

DISNEY TRIVIA

5th graders and up, Wednesday, November 29 from 3:30 to 4:30 pm. Test your Disney knowledge at this trivia game. Registration required.

ZENTANGLE

5th graders and up, Tuesday, December 5 from 3:30 to 5 pm. Learn how to create your own Zentangle design with local artist Ezia 'Z' Leach. Registration required.

ESCAPE ROOM

All ages, Friday, December 8 and Saturday, December 9 at various time slots. Can you escape the room? Put your puzzle-solving skills to the test to find hidden clues and use them to find your way out of the room in this interactive live-action game. Registration required.

PUZZLE-OFF

All ages, Tuesday, December 12 at 7 pm. Are you excellent at putting puzzles together? Think you are a super speedy puzzle solver? Put your speed and skills to the test at this race where you will compete against others to try to be the first one to finish putting together a puzzle. Registration required.

GEEKY WREATHS

5th graders and up, Friday, December 15 from 3:30 to 4:30 pm. Create your own geeky wreath, whether it's a Deathly Hallows symbol, the Bat Signal, or a collage of all your favorite fandoms. Registration required.

HOLIDAY SCAVENGER HUNT

5th graders and up, Thursday, December 21 from 3:30 to 4:30 pm. Set your sights on a quest that spans the entire library in this holiday-themed scavenger hunt where you will try to find hidden objects and more. Registration required.

Adult Programs

OPERA TALKS sponsored by Shoreline Village CT.

Each program begins at 6:30 pm and is scheduled a few days prior

to the broadcast of the Metropolitan Opera production at Regal Cinema in Branford

- | | |
|-------------|--|
| October 3 | Vincenzo Bellini's Norma with Paul Hawkshaw of the Yale School of Music. |
| October 10 | Mozart's The Magic Flute with Paul Berry of the Yale School of Music |
| November 16 | Thomas Adès's The Exterminating Angel with Paul Hawkshaw. |

BOOKS, ART & MUSIC

- | | |
|-------------------------|--|
| October 12 | Guilford Poets Guild: Poets Laureate from Connecticut Towns, 6:30 pm |
| October 17 | Robert Baldwin on Van Gogh's Starry Night, 7 pm. |
| Oct. 23, 30, Nov. 6, 13 | Carol Rizzolo on Homer's The Odyssey a 4-part series co-sponsored by SSILLs, 10:30 am - 12 pm. |
| October 15 | "The Songs of Woody Guthrie" performed by Phil Rosenthal, 2 pm |
| Oct. 25 & Dec. 13 | Future Classics with Mark Schenker (titles tba), 7 pm |
| October 26 | Guilford Library Association Annual Meeting & Concert, 7 pm |
| November 9 | Guilford Poets Guild: Reading by Alan Garry, CT Veteran Poet Laureate, 6:30 pm |
| November 12 | Joe Flood performs from "A Troubadour's Tour of Historic Nantucket," 2 pm |
| November 2 | Carlos Eire, 7pm |
| November 8 & 15 | The Bill of Rights and the Separation of Powers: a legal discussion with retired law professor Howard Blau, 4 pm |
| December 14 | Guilford Poets Guild: Holiday Roundtable, Found Poems, 6:30 pm |

FILMS

Monday Night Movies: A film every Monday evening at 7 pm from October 16 - December 11. Check our website www.guilfordfreelibrary.org for current listings.

- | | |
|------------|--|
| October 19 | "Most Likely to Succeed" a documentary on education, 6:30 pm |
| November | A mini film festival featuring the work of Hayao Miyazaki (dates and titles tba) |

FINANCIAL HEALTH

- | | |
|-------------|-------------------------------|
| October 5 | Your Life in Retirement, 4 pm |
| November 7 | Medicare 101, 7 pm |
| November 8 | Fine Wine and Finance, 7 pm |
| November 29 | Extended Legacy, 7 pm |

TECHNOLOGY

"Book a Librarian" - Free technology and research assistance is available by appointment every Tuesday and Thursday morning.

Address the topic of your choice in a one-on-one session with a professional librarian.

Small group computer classes and drop-in sessions are regularly scheduled throughout the year. Check www.guilfordfreelibrary.org for the most current listings.

Friends of the Guilford Library Holiday Book Sale

The Friends of the Guilford Library's annual Holiday Book Sale

kicks off the season, by featuring a super selection of gift books for all ages, holiday-themed children's books, and stocking stuffers. All are pristine condition and marked at prices that will make your pocketbook rejoice. Proceeds from the sale support the Library, helping to purchase books, train Library staff, fund Library programs, and buy equipment.

Thursday, November 30, 9 am to 8 pm

Friday, December 1, 9 am to 6 pm

Saturday, December 2, 9 am to 1 pm.

SARAH



WE'RE NOT ASKING YOU TO MOVE MOUNTAINS....

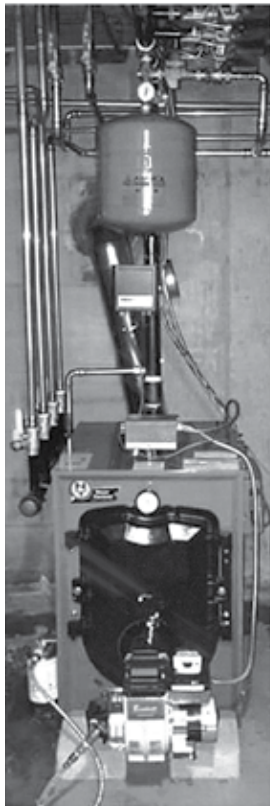
It is not every day you have someone offer to climb 19,340 feet above sea level to celebrate your 60th Anniversary and to recognize the history of service on behalf of people with differing abilities.

Lew Nescott Jr., an avid climber who has climbed to the summit of 3 of the 7 highest peaks in the world, has offered to climb Mount Kilimanjaro to benefit the SARAH Family of Agencies. Lew will start his ascent of Mount Kilimanjaro on February 18, 2018 and will place the SARAH flag at the summit!

Lew knows that SARAH has been hit hard by recent funding cuts. The gap between state and federal funding and

the cost of providing quality services continues to grow. Lew is generously donating his time and talent and is willing to climb a mountain to help us meet this challenge. We won't ask you to climb a mountain but you can join us in this effort as well.

Contact Yetta Augur, Development Director, at: yetta@sarahfoundation.org or at: 203-453-6531 if you have any questions or need more information.



If your boiler does not look like this you are wasting \$400/per year.



PRE-SEASON SALE!
Call for our Current 2017-2018 Oil Plans

FULL SERVICE OIL COMPANY
447 Spencer Plains Road, Westbrook, CT 06498
• Automatic Fuel Delivery • Burner Installation
• 24-Hour Emergency Service

HOD 591
HTG.0403715-B1
0303724S1



www.moronioil.com

Parks and Recreation

A wonderful summer of people enjoying the beaches and program offered in Guilford! The staff at Guilford Parks and Recreation thank you for your support.

Please take a look at the Department Fall Brochure for a full listing of programs (guilfordparkrec.com). There are programs for toddlers, youth, adults and active adults! Parent's looking for a night out, Laser Tag and Dodgeball for grades 4-6 or Sports R Fun for ages 5-6. Mt Southington Ski Trip in January for grades 5-8 and we will be taking a trip to MetLife Stadium for Patriots vs Jets for anyone interested. Gymnastics, preschool programs, tennis at Guilford Racquet Club, boating, fitness, CPR/First Aid, Women's Volleyball League and more are some of the programs available for registration. If you have a program idea, feel free to contact Ellen Clow at clowe@ci.guilford.ct.us and let her know.

Bittner Park Renovation: Take a ride to Bittner Park to see the transformation at the skate park. A new surface, repainted skate ramps, pickleball and basketball courts... a fantastic multi-generational area to recreate. The Park employees did an excellent job clearing the area around the park for folks to walk and enjoy.

The Department is working with volunteers to create an 18-hole disc golf course at Peddler's Park. We are excited to bring this fast growing sport to Guilford. People interested in

sponsoring a tee or volunteering to help clear fairways should contact the Parks and Recreation Department.

Fun fact: Did you know that Guilford Parks and Recreation Department maintains 150 acres of land? This includes over 40 athletic fields (19 baseball, softball, t-ball and 20+ multi use (lacrosse, soccer, football, field hockey, etc).

Upcoming Events

ANNUAL HOLIDAY FAIR - KRINGLE'S CRAFT VILLAGE

The Annual Senior Holiday Fair at the Community Center will be held this year on Friday, December 1, 4:00 - 7:00 pm & Saturday, December 2, 9:00 am - 2:00 pm. Kringle's Craft Village will include photos with Santa, crafts, games & other family activities in addition to the regular Holiday Fair sale of crafts, sewing, knitted items, jewelry, used books, baked goods, marketplace & other raffles. A limited number of local crafters will be invited to participate so there will be a wide selection of items to choose from for your holiday shopping. If you would like to help the knitters or crafters prepare items please contact the office. The knitters meet on Mondays 1:00 - 2:30 & the crafters meet on Tuesdays, 10:00 am to 12:00 noon. In addition, we are seeking donations of used books of all types, including novels, children's, young adults, cook books etc., that are in good condition for our book sale, & used jewelry in good condition for our jewelry table.

Youth & Family Services and Parks & Recreation

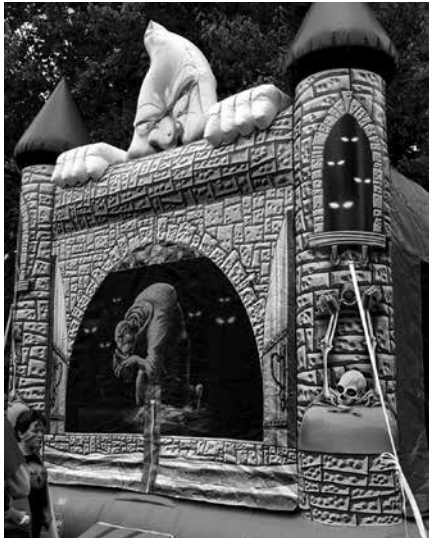


Scarecrow Building Contest: On Friday, October 13th the Shoreline Chamber of Commerce partnering

with Guilford Parks & Recreation and Guilford Youth & Family Services will hold a Scarecrow Building Contest. Businesses will have an opportunity to build a scarecrow that represents their business which will then be displayed on the town green. \$25.00 fee per scarecrow. Please bring your scarecrow to the green between 1-3 pm for placement. Proceeds benefit It's Worth It. A Guilford DAY Initiative. Guilford DAY and its supporters help Guilford youth make positive choices, ultimately reducing drug and alcohol use. Please call 203-453-8068 for more information or register online at www.guilfordparkrec.com with program #41107.

Halloween Window Painting: On Saturday, October 14th, Guilford Parks & Recreation, Guilford Youth & Family Services and It's Worth It. A Guilford

DAY initiative will collaborate to bring the annual Halloween Window Painting Contest to the Guilford Green. Sketches must be submitted to Karolin Regan @ GY&FS by October 6th to ReganK@ci.guilford.ct.us. The contest will take place from 10:00 am - noon (rain date 10/15). Individuals, groups and families (up to 7 individuals) are encouraged to decorate a business window for the fall season. Supplies will be provided. Winner will be announced at The Halloween Spooktacular on October 29th. \$25.00 per group. Register online at www.guilfordparkrec.com with program #41112. Windows are to be cleaned on or before November 1st. If you would like to donate your business window for this event, please contact Karolin Regan @ 203-453-8047 or ReganK@ci.guilford.ct.us.



Halloween Spooktacular: On October 29th from 2:00-4:00 p.m. the Halloween Spooktacular will take place on the Guilford Green. This event is sponsored by Guilford Parks & Recreation, Guilford Youth & Family Services and It's Worth It. A Guilford DAY initiative. Activities will include a performance on stage, inflatables, ice cream from Ashley's and more! Park Street will be utilized for a "trunk or treat." Please register your families, organizations, businesses "trunk" to be part of this wonderful community event. To register a "trunk" for this event please go online to guilfordparkrec.com and register with program #41106.

Have fun at the Youth & Family and Park & Rec Spooktacular this October!

Henry Whitfield State Museum

248 Old Whitfield Street
 Guilford, Connecticut 06437-3459
 Phone: 203-453-2457
 Fax: 203-453-7544
 E-mail: whitfieldmuseum@ct.gov
 Website: www.cultureandtourism.org
 Facebook: www.facebook.com/HenryWhitfieldStateMuseum

Hours:

May-October 10:00-4:30,
 Wednesday-Sunday
 November-April by appointment,
 Monday-Friday

Admission: \$8 Adults, \$6 Seniors & College Students, \$5 Children (6-17), FREE for children under age 6

HALLOWEEN HYSTERIC'S AT HENRY'S

Saturday, October 28
 10:00-4:30

See the 378-year-old Whitfield House in a new light – or rather, in no light. The lights will be off as visitors explore the entire building. The basement, usually closed to the public, will have a few surprises for those brave enough to venture there. Bring a flashlight to investigate all the nooks and crannies. In the museum's Visitor Center, enjoy some candy, craft a gravestone or gargoyle out of clay, and do some coloring. In the Education Center, learn about the Guilford Green graveyards,



Whitfield Museum Spooky House.

the Whitfield connection to the Salem witch trials, and the origins of our Halloween traditions in the "Holidaze" display. This program is recommended for ages 6 and older. All included with regular admission and free parking.

HARVESTING HISTORY

Thanksgiving Friday, November 24
 10:00-4:30

Thanksgiving Friday is the perfect time to visit Connecticut's own Pilgrim-era museum. Taste 17th-century English and Native American foods, touch 17th-century English and Native American reproductions, hear hourly readings of the "Pilgrim Cat" storybook, write with a quill pen to "Make Your Marke," learn about the myths and origins of our Thanksgiving traditions in the "Holidaze" display, and take a self-guided tour of the 1639 Whitfield House. All included with regular admission and free parking.



Whitfield Museum Thanksgiving.

FIRELIGHT FESTIVAL

Friday, December 1
 4:00-8:00 pm

Enjoy an evening of festive luminaria, lanterns, outdoor fires, roasted marshmallows and chestnuts, popcorn, hot chocolate, hot cider, readings of "The Night Before Christmas," Connecticut's oldest house after dark, the origins of Christmas traditions in the "Holidaze" display, and natural holiday ornaments crafts. No rain/snow date. All included with regular admission and free parking.



Whitfield Museum Firelight Festival Lantern.

Fall is for Planting

During my thirty plus years in the garden industry, I have always abided by the mantra “fall is for planting.” Although we all get the urge to plant in the spring, there are many sound reasons why fall planting should be considered.

Perennials that are planted in the fall have a full season to establish good root systems, and will emerge next spring as lush and sturdy plants. As members of the Pollinator Network, we are conscientious about sourcing plants from growers who protect pollinators. Take time on selecting the right plants to support bees, butterflies, and hummingbirds, flowering from March to November.

Trees and shrubs planted in the fall do not suffer from the heat and drought stress that can affect those planted in

the spring and summer. Root growth continues until the ground freezes, providing the plant with a developed network or support for early growth next year.

Fall is also the time to plant many spring flowering bulbs, like tulips and daffodils. Daffodils are best in this area because they are deer resistant and will bloom for years. There is nothing like the sight of the first crocus or daffodils to tell you spring has arrived. There are many different bulbs to choose from that are planted in the fall.

Fall is also the best time to work on your lawn. The warm days and cool, dewy nights, coupled with usually abundant rainfall makes fall the best time to plant a new lawn or renovate or repair spots that may have been damaged during the summer. Take

time to look at the label on grass seed packages to make sure you are getting a good perennial grass seed that comes back year after year. Many grass seed packages have a large amount of annual grass that does not come back the next year. Picking a quality grass seed blend will ensure success. Lime is always a good item to apply in the fall for lawns. This will help correct the pH in the soil and make all of the nutrients work better. A healthier lawn is always great when warding off lawn disease and a drought.

Finally, what would fall planting be without mums, asters, Montauk daisies, and pumpkins and gourds? Asters and Montauk daisies are among the bee's favorites.

Leigh, one of The Village Greene Horticulturists

Guilford Lakes Golf Course - “Guilford’s Little Augusta”

Even though the leaves will be changing color and beginning to fall off the trees, there is still plenty of great golf to be enjoyed at “Guilford’s Little Augusta” as it is now being referred to by many. Due to its pristine condition, many who play the course are fondly comparing it to Augusta GA, the home of the Masters Golf tournament. While this may be a stretch, it is certainly a compliment towards the quality, condition and enjoyment of GLGC.

Over the summer, more than 60 young golfers participated in the Junior Golf Camps. They learned about golf rules, etiquette, and appropriate dress and of course, improved their level of play. Many came back during the season, playing alongside their parents.

The first Annual Guilford Amateur Golf Championship was held on July 22. Thirty participants competed in an 18 hole medal play tournament. The event included a light breakfast and lunch. Planning for 2018 is underway and we hope to attract a larger field including women and junior golfers.

The first Octoberfest Fall Classic Golf Championship will

be held on October 28 & 29. It will be a 36 hole individual stroke play event played over the two days. It will be a 10 am Shotgun start, weather permitting. There are divisions for men, women and juniors. Food, refreshments and prizes will be included in the entry fee. There will be special hole-in-one prizes offered throughout the weekend. Players will have an opportunity to win a golf vacation to St. Andrews Scotland, Pebble Beach CA or Hawaii. This event is guaranteed to be fun for all participants.

The fall season of golf is always exciting and provides an opportunity to enjoy the remaining great weather. To learn more about our fall season and events and to see what 2018 has planned to date, please see our website at www.guilfordlakesgolf.wixsite.com. 2018 Membership information is also on the website.

Here’s to good golf!

Mike Papp - PGA Professional Guilford Lakes Golf Course
203-453-8214



240 Landons Way, Guilford



2 Osprey Commons, Clinton



95 Rolling Meadow Rd, Madison



5 Louis Drive, Branford



122 N. Fair Street, Guilford



24 Dairy Hill Road, Madison



226 Stony Creek Road, Branford



448 Jennifers Drive, Guilford



261 Cosey Beach Ave, E. Haven



47 Liberty Street, Madison



663 Nut Plains Road, Guilford



William Pitt

Sotheby's INTERNATIONAL REALTY

The colors of autumn create a warm, inviting backdrop that blends cool evenings and great food shared at home among family and friends.

If you are in the market for a new residence to enjoy those peaceful evenings in, allow us to assist.

William Pitt Sotheby's International Realty takes great pride in artfully uniting extraordinary homes with extraordinary lives.

williampitt.com

GUILFORD BROKERAGE • 102B BROAD STREET • 203.453.2533
MADISON BROKERAGE • 670 BOSTON POST ROAD • 203.245.6700

Each Office is Independently Owned and Operated.



32 Osprey Commons, Clinton



1720 Little Meadow, Guilford



1439 Durham Road, Madison



231 Nortontown Road, Guilford



10 Everts Lane, Madison



51 Buck Hill Road, Madison



66 High Street, Guilford



20-22 N. High Street, Clinton



20 Holly Park Road, Madison



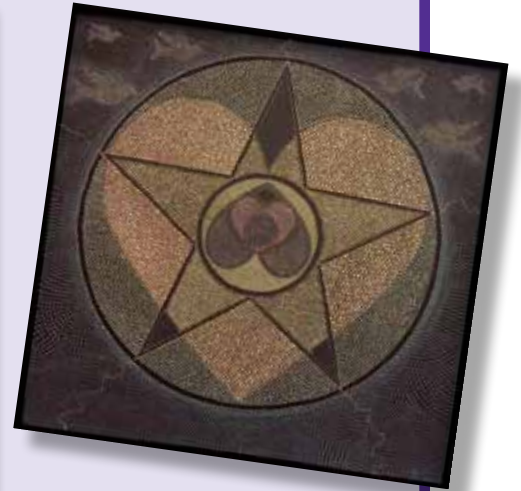
3 West Sussex Place, Madison



31 Horsebarn Lane, Madison

International Day of Peace Art Exhibit

Held September 21, 2017





Sunnyside Up

Coffee Shop


7 Days a week
7 am - 1 pm
Eat In or Take Out

33 Water Street,
Guilford, CT 06437


203-458-TOGO (8646)

**Home & Auto
go together.
Like you & a
good neighbor.**

Some things in life just go together. Like home and auto insurance from State Farm®. And you with a good neighbor to help life go right. Save time and money. **CALL ME TODAY.**




LaTorre Osterling Ins Agcy Inc
Lauren LaTorre-Osterling, Agent
38 Academy Street
Madison, CT 06443
Bus: 203-245-4555
Fax: 203-245-4730



State Farm Mutual Automobile Insurance Company, State Farm Indemnity Company, Bloomington, IL • State Farm County Mutual Insurance Company of Texas, Dallas, TX • State Farm Fire and Casualty Company, State Farm General Insurance Company, Bloomington, IL • State Farm Florida Insurance Company, 1601976 Winter Haven, FL • State Farm Lloyds, Richardson, TX

**GET MONEY FOR
YOUR GOLD**

The Original 

**GUILFORD
COIN
EXCHANGE**

Local Business Since 1970

Open Monday - Saturday
9:30 am - 4:30 pm

69 Whitfield Street, Guilford, CT
On The Guilford Green / Exit 58 off I-95
203-453-9363

Events Presents ~ Saybrook Country Barn



Furniture? No problem. Rugs? They've got that. Window treatments? Lighting? Bedding and bath? Yup, all that too. And don't forget hardware, and even apparel. Where could you possibly find all that? Saybrook Country Barn (SCB), of course.

What started with a pioneering grandmother (Clara Zirkenbach) in the mid-1970s and her indomitable "I can do that" attitude has continued into two more spirited generations. The family has spearheaded three expansions that have broadened product offerings and catapulted showroom space from 2,000

to 42,000 square feet. This October marks the 40th anniversary of SCB.

It's a true family affair. Keith Bolles (who started with emptying waste bins when he was 4) represents the third generation. He's now in charge of marketing. Mother Jane heads up the home and apparel side. Father Keith is President and oversees everything - from executive duties to showroom upkeep.

How has the SCB family become so successful? "Customers would say I wish there were a rug shop or a curtain shop" says Bolles. "We said: 'We can do that.' We listen to our customers so that we can provide exactly what they want."

The family's customer-focus makes for an inspiring shopping experience. Customers say SCB is the most beautiful place they've ever been to. SCB displays the furniture and accessories as they'd look in customers' homes. Ninety percent

of what SCB does for its customers is customized. And if that isn't enough, SCB visits customer homes for in-home design consultation. That way customers can get exactly what they want. That's the point.

Through the success, the family remains humble. "There's only so much Mom and Dad and I can do on our own," said Bolles about the SCB employees. "Without them, we'd be nothing." And as to customers? "We don't always get the chance to say 'thank you.' We are here because you want us here. We appreciate it."

Looking forward, there's no reason to change the formula. "People enjoy the experience of shopping and that person-to-person experience," says Bolles. "It's where our future lies. Great products, great atmosphere, and top notch customer experience. If we do those three things, we'll be just fine."

Ticks are Vectors to Many Different Types of Diseases

Unfortunately, most of us have become all too familiar with ticks this summer and now in the autumn. The incidence of tick bites is on the rise, and as a result there has been an increase in tick-borne diseases affecting our pets.

A tick's life cycle includes the egg and three life-stages, with each stage requiring a blood meal for further development. This blood meal is where our pets come into play. Ticks are vectors to many different types of diseases, with transmission possible after a tick has been attached for at least 16-24 hours. Some of the most important tick-borne diseases in our pets are outlined below.

Lyme disease is a bacterial infection spread by the Deer tick. This infection can cause lameness, decreased appetite, and a fever. In severe or untreated cases, the kidneys can become infected causing kidney failure. There is a vaccine available for protection against infection.

Anaplasmosis is another bacterial infection spread by the Deer tick and Brown Dog tick. The bacteria infects the bone marrow and can cause low platelets and sometimes anemia. Infected animals can present with bruising, decreased appetite, lethargy, lameness, and a high fever.

Fortunately, there are means available for protecting our pets from these tick-borne diseases. At Guilford Veterinary Hospital we offer a multitude of options to suite your pets needs for protection, including oral preventatives such as Nexgard and Bravecto. Also, remember to use preventatives year-round as ticks can become active if the ground temperature is above 45-degrees!

Guilford Veterinary Hospital, LLP
81 Saw Mill Road, Guilford, CT 06437
203-453-2707, www.guilfordvet.com

*Want to Reach Every Home and Business in Town?
Call Essex Printing at 860-767-9087*

THE NEIGHBORHOOD PHARMACY FOR GUILFORD

Free Delivery 7 Days a Week

We strive to provide the highest level of personalized care and service.

“Service the way it ought to be”



Connecticut Pharmacy of Madison

200 Boston Post Road, Madison
Across from Hammonasset Ford
203-421-2132

Sunday: 9:00 am-3:00 pm / Mon-Fri: 8:30 am-7:00 pm
Saturday: 9:00 am-5:00 pm

YOU KNOW WHAT CONTROLS PESTS? SCIENCE.

We're Bartlett Tree Experts, a 100+ year old tree and shrub care company with global reach and local roots. With science-based solutions and expert service we protect your property from threats like:

- Damaging Insects
- Tree & Shrub Diseases
- Deer & Ticks
- Root Problems



Call 860.767.1752 or visit BARTLETT.COM 

Check us out at
www.themeatking.com
Place your order 1 day,
and pick up the next!



STORE HOURS
Tuesday-Friday: 10am-7pm
Saturday: 9am-5pm
Sunday & Monday: Closed

★ FERRARO'S MEAT KING IS NOW IN MADISON ★

COME IN AND SELECT FROM WHAT HAS
MADE FERRARO'S FAMOUS FOR SO LONG

GOURMET ANGUS STEAK BURGERS

Buffalo chicken
Jalapeno
Bacon & Cheddar
Broccoli Rabe & Garlic
9 varieties to choose from

SPECIALTY BURGERS

Pepper Steak Burgers
Georgia Hot Burgers
Turkey Burgers

STUFFED ITEMS

Stuffed Boneless Chicken Breast (6 different stuffings)
Stuffed Whole Chickens (3 different stuffings)
Stuffed Cornish Hens (3 different stuffings)
Stuffed Turkey Breast (2 different stuffings)
Stuffed Turkey Thighs (2 different stuffings)

MARINADES & RUBS

Marinated Steak
Marinated Boneless Chicken Breast
Marinated ½ Chickens
Marinated Chicken Thighs
Marinated cubed Chicken Thighs
Marinated Chicken Wingettes
Marinated & Rubbed Steaks



SAUSAGES

Regular Rope in Sweet, Hot or Turkey

GOURMET SAUSAGES

Chicken
Zesty Italian
Asiago Cheese
8 varieties to choose from

SAUSAGE PATTIES

Original Hot or Sweet
Turkey
Breakfast Rope

STUFFED PINWHEELS

Beef-Mushroom & Mozzarella or Spinach & Mozzarella
Chicken-Buffalo or Sorrento
Pork-Original or Spinach & Mozzarella

SUNDAY SAUCE ITEMS

Beef or Pork Bracciola
Sauce Packs

PORK ITEMS

Stuffed Pork Chops (6 different stuffings)
Stuffed Pork Crown Roast (2 different stuffings)
Stuffed Pork Roast (2 different stuffings)
Ferraro Famous Porketta

181 Boston Post Road, Madison, CT 06443 • 203-421-6294



Guilford Art Center

DESIGNERS CIRCUS POP-UP SHOPPING EVENT

Friday, Oct 6. 10 am-6 pm

Saturday, Oct. 7 10 am-6 pm

Sunday, Oct. 8 11 am-3 pm

Designers Circus, a Boston-based “under-the-radar” shopping event, is returning to Guilford and will hold a pop-up sale in the gallery of Guilford Art Center. Designers Circus features new boutique women’s clothing at wholesale prices that are 50-90% “below regular retail prices. Shoppers will find creative fashions and accessories from over 70 domestic and international crafts-women and small-scale international designers. Admission is free.

GAC HOLIDAY SHOP: ARTISTRY FOR THE HOLIDAYS

Nov. 2 - Jan. 7

Opening Reception: November 2, 5-8 pm.

Free and open to the public.

It’s time for Guilford Art Center’s annual holiday sale of fine craft from over 250 American artists. Come visit the GAC Shop, which expands into the gallery for the holidays, to find beautiful and unique gifts, including ceramics, candles, glass, jewelry, leather goods, clothing, accessories, toys, specialty foods and more. This



Artistry Holiday Shop.
Photo Courtesy of the Guilford Art Center.

year features many new artists and wide variety of price points - you’re sure to find something for everyone on your list!

SOUP FOR GOOD

Sunday, Nov. 12 4:30 - 6:30 pm

Pick our your one-of-a-kind handcrafted ceramic bowl, made by GAC potters, and enjoy soup, bread dessert and a glass of wine or sparkling water. This event benefits GAC and the Community Dining Room, held in GAC’s school and pottery studio. Tickets available in advance or at the door. Call GAC for reservations at 203-453-5947 or visit www.guilfordartcenter.org.



2017 Vista Tour de Shore

SUNDAY, OCTOBER 15



Westbrook Elks Lodge

Choose from 5, 25, 40 and 60 mile routes.

Rides feature beautiful Connecticut back roads and shoreline views.

Net proceeds from this event will benefit the Vista Endowment Fund. Vista’s mission is providing services and resources to assist individuals with disabilities achieve personal success

Biking through barriers

Register at: vistatourdeshore.com • For more information call 860-399-8080

BISHOPSORCHARDS.COM

BISHOP'S ORCHARDS

FARM MARKET & WINERY



FALL FUN ON THE FARM!

PICK-YOUR-OWN: 10AM-5PM
APPLES*, PEARS & RASPBERRIES

GUILFORD ORCHARDS OPEN DAILY

*NORTHFORD ORCHARD OPEN HOLIDAYS & WEEKENDS

CORN MAZE: 10AM-5PM

OPEN WEEKENDS & HOLIDAYS THROUGH OCTOBER

LITTLE RED BARN: OPEN DAILY

PUMPKINS, FOOD, BARREL TRAIN, ACTIVITES & MORE!!

#PICKBISHOPS



MAIN ORCHARD: 526 NEW ENGLAND ROAD, GUILFORD

***NORTHFORD ORCHARD:** 1916 MIDDLETOWN AVE., NORTHFORD

*OPEN WEEKENDS & HOLIDAYS THROUGH OCTOBER FOR APPLE PICKING

Farm Market • Pick Your Own • CSA • Winery • Bakery • Seasonal Events

CALL 203-458-PICK FOR INFO ON OUR PICK-YOUR-OWN ADVENTURE.

FARM MARKET: US RTE. 1, I-95 EXIT 57, GUILFORD • 203-453-2338 • OPEN MON-SAT 8-7, SUN 9-6



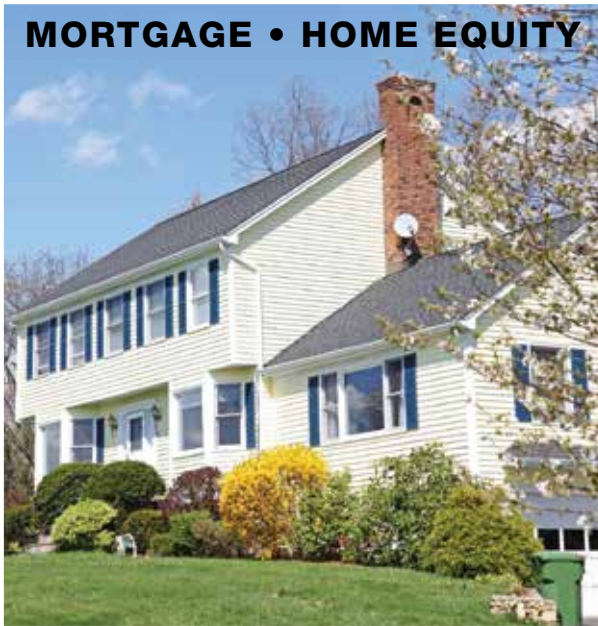
GUILFORD EVENTS

Town Hall
31 Park Street
Guilford, CT 06437

PRSRT STD
U.S. Postage
PAID
Permit No. 155
Deep River, CT

POSTAL CUSTOMER

MORTGAGE • HOME EQUITY



BUSINESS • COMMERCIAL



Awesome Loan Rates
essexsavings.com



Essex, 35 Plains Road, 860-767-2573 • Essex, 9 Main Street, 860-767-8238 • Chester, 203 Middlesex Avenue, 860-526-0000
Madison, 99 Durham Road, 203-318-8611 • Old Lyme, 101 Halls Road, 860-434-1646 • Old Saybrook, 155 Main Street, 860-388-3543

Toll-Free: 877-377-3922 • www.essexsavings.com

Member FDIC

 Equal Housing Lender